

SWAAG 2012

**Annual Meeting of the
Southwest Division of the
Association of American Geographers**

Meeting Program

**25-27 October 2012
Las Cruces, NM**

Edited by Michaela Buenemann
Department of Geography
New Mexico State University



Acknowledgments

Thank you all for attending the 2012 Annual Meeting of the Southwest Division of the Association of American Geographers and making this a successful meeting. Efforts such as this require a host of folks to make them work, and we would like to formally acknowledge some people for their efforts.

Faculty and staff within the NMSU Department of Geography have worked on various tasks as we prepared for this conference, and special kudos should be extended to Michaela Buenemann and Robert Czerniak, the Co-Chairs of the Program Committee. Daniel Dugas and John Wright organized and lead field trips to White Sands National Monument and Downtown Las Cruces / Historic Mesilla. Christa Slaton, Dean of the NMSU College of Arts and Sciences, provided generous support by hosting the beverages and snacks during our breaks. Jim Dryden with NMSU's Information and Computer Technology office helped us set up the online ShopCart that allowed you all to pay your fees. Susan DeMar, our departmental secretary, helped us keep track of your treasure and pay our bills. Staff at the Las Cruces Ramada Inn worked extensively with us to make all of the room and catering arrangements, and they also generously covered accommodation for one of our keynote speakers. Staff at the Mesilla Valley Bosque State Park extended a special rate for rental of the Park's facilities as a venue for our Friday night dinner and awards banquet, and Andele's Restaurant in Mesilla extended very generous rates on the dinner we enjoyed at the event. Reverend Bonnie Smith of NMSU's Office for Student Accessibility Services arranged for sign language interpretation services that allowed hearing impaired people to participate in the conference.

We also wanted to thank people with the AAG that helped with the conference. We extend the warmest of thanks to Dr. B. L. Turner II and Dr. Eric Sheppard for agreeing to be our keynote speakers. Past SWAAG meeting organizers and current SWAAG officers were very helpful in sharing their experiences with previous conferences that guided our plans and preparation. We also want to thank SWAAG Chair Darren Purcell, Secretary Murray Rice, Treasurer Rebecca Sheehan, former Regional Councilor Alyson Greiner, and current Regional Councilor Ron Hagelman for traveling to Las Cruces to join us for the conference and for helping plan various aspects of the meeting. Lastly, but certainly not least, we thank all of the folks that traveled to Las Cruces at a busy time of the term to join us and make the 2012 Annual SWAAG Meeting a success.

Bienvenidos y muchas gracias a todos!

Christopher Brown
Department Head, NMSU Department of Geography

Table of Contents

SWAAG Meeting Venues	4
Floor Plan	5
Agenda in a Nutshell	5
Abstracts	6
Thursday, October 25.....	6
Conference Check-In	6
Geography Education (1)	6
Space, Place, and Time (2)	7
Protecting Sacred Sites (3)	7
Posters	8
Reception	8
Dinner	9
Friday, October 26.....	9
Conference Check-In	9
Student Paper Competition I (4)	9
Landscapes and New Mexico (5)	10
Indigenous Geographies (6)	10
Poster Session I (7)	11
Morning Break and Snacks	11
Student Paper Competition II (8)	12
Environmental Change (9)	13
Law's Geographies (10)	13
Poster Session II (11)	14
Luncheon & B. L. Turner II Keynote	15
Remote Sensing Applications (12)	16
Climate, Water, and People (13)	16
Transportation Geography (14)	17
Student Poster Competition (15)	17
Afternoon Break and Snacks	18
GIS Applications (16)	18
Biogeography (17)	19
Geography Graduate Programs (18)	19
SWAAG Business Meeting	20
Awards Banquet, Dinner Buffet, & Eric Sheppard Keynote	21
Saturday, October 27.....	22
Field Trip to White Sands National Monument	22
Field Trip to Downtown Las Cruces and Historic Mesilla	22
Other Trips	22
Meeting Participants	23
Bars, Restaurants, and Cafés in Las Cruces and Mesilla	25
Attractions in Southern New Mexico	27

2012 SWAAG Meeting Venues



1 - Ramada Palms Hotel and Conference Center
(333524.447 mE, 3573152.969 mN)

2 - Mesilla Valley Bosque State Park
(328308.682 mE, 3570046.998 mN)

0 0.25 0.5 1 1.5 Miles

UTM, Zone 13S, NAD 1983



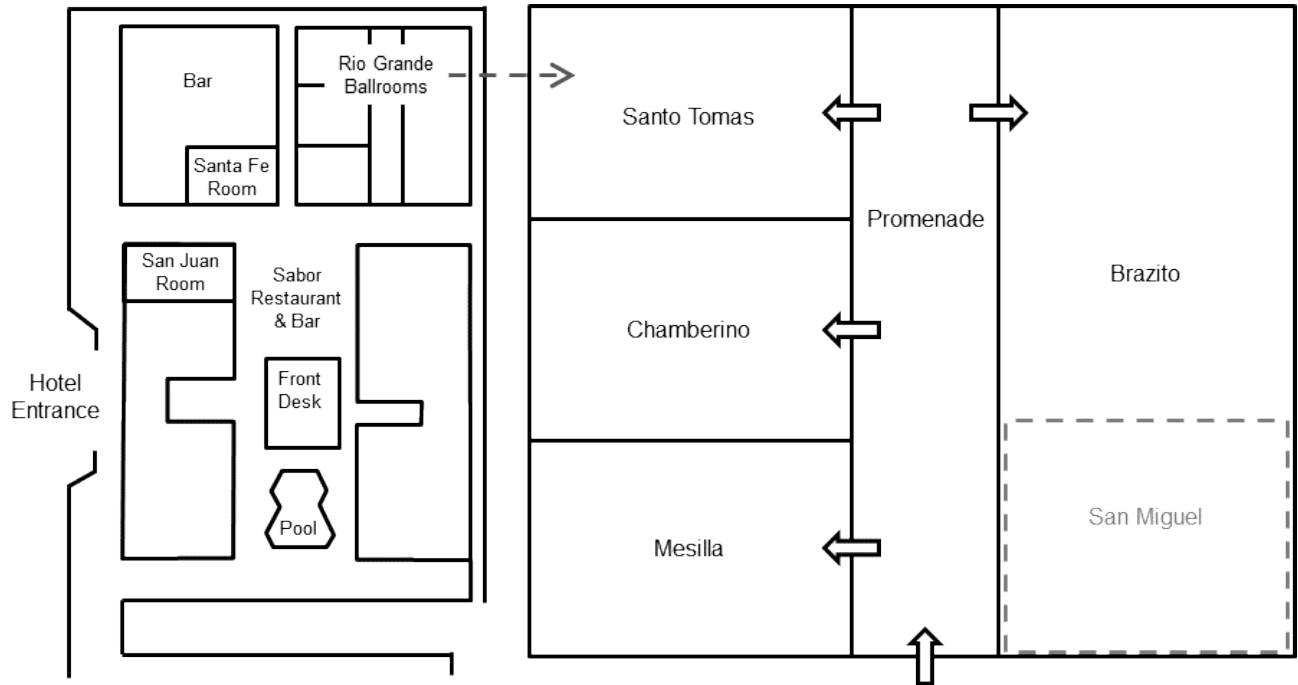
Directions from the Ramada Palms Hotel and Conference Center to the Mesilla Valley Bosque State Park

- Start: Ramada Palms Hotel and Conference Center, 201 E University Ave, Las Cruces, NM 88005
- Head southwest on E University Ave. toward S. Valley Dr. and go 1.5 miles
- Turn right onto Avenida De Mesilla and go 0.5 miles
- Turn left onto Calle Del Norte and go 2.1 miles
- Turn left to enter the Mesilla Valley Bosque State Park and go about 1 mile
- End: Mesilla Valley Bosque State Park, 5000 Calle Del Norte, Mesilla, NM 88005

Directions from the Mesilla Valley Bosque State Park to the Ramada Palms Hotel and Conference Center

- Start: Mesilla Valley Bosque State Park, 5000 Calle Del Norte, Mesilla, NM 88005
- Head north on S Fairacres Rd. toward Calle Del Norte and go about 1 mile
- Turn right onto Calle Del Norte and go 2.1 miles
- Turn right onto Avenida De Mesilla and go 0.5 miles
- Turn left onto W University Ave. toward S. Valley Dr. and go about 1.5 miles
- End: Ramada Palms Hotel and Conference Center, 201 E University Ave, Las Cruces, NM 88005

Floor Plan and Agenda in a Nutshell



Time	Mesilla	Chamberino	Santo Tomas	Promenade
T, 10/25, 1:00 PM – 5:00 PM	Conference Check-In (San Juan)			
T, 10/25, 3:20 PM – 5:00 PM	Geography Education	Space, Place, and Time	Protecting Sacred Sites	Posters
T, 10/25, 5:00 PM – 7:00 PM	Reception (Pool)			
F, 10/26, 8:00 AM – 12:00 PM	Conference Check-In (San Juan)			
F, 10/26, 8:20 AM – 10:00 AM	Student Paper Competition I	Landscapes and New Mexico	Indigenous Geographies	Poster Session I
F, 10/26, 10:00 AM – 10:20 AM	Break & Snacks (Promenade)			
F, 10/26, 10:20 AM – 12:00 PM	Student Paper Competition II	Environmental Change	Law's Geographies	Poster Session II
F, 10/26, 12:00 PM – 1:20 PM	Luncheon and Keynote by B. L. Turner II (Brazito)			
F, 10/26, 1:20 PM – 3:00 PM	Remote Sensing Applications	Climate, Water, and People	Transportation Geography	Student Poster Competition
F, 10/26, 3:00 PM – 3:20 PM	Break & Snacks (Promenade)			
F, 10/26, 3:20 PM – 5:00 PM	GIS Applications	Biogeography	Geography Graduate Programs	Posters
F, 10/26, 5:00 PM – 6:00 PM	Business meeting (San Miguel)			
F, 10/26, 6:30 PM – 9:30 PM	Dinner Banquet, Awards Presentation, and Keynote by Eric Sheppard (Mesilla Valley Bosque State Park)			
S, 10/27, 8:00 AM – 5:00 PM	Field Trip: White Sands National Monument			
S, 10/27, 10:00 AM – 3:00 PM	Field Trip: Downtown Las Cruces and Historic Mesilla			

Abstracts



A compilation of abstracts of paper and poster presentations is available online at <http://geography.nmsu.edu/swaag2012/docs/CompilationOfAbstracts.pdf>.
A few desk copies are also available for your review in the conference check-in area.

Thursday, October 25 • 1:00 PM - 5:00 PM

Conference Check-In

Room: San Juan



Thursday, October 25 • 3:20 PM - 5:00 PM

Geography Education (1)

Room: Mesilla

Session Chair: Michael DeMers (New Mexico State University)

3:20 PM: A Geodesign Project to Augment a Traditional GIS Course; Michael DeMers^{1*}

¹ Department of Geography, New Mexico State University, Las Cruces, NM

3:40 PM: Emerging Technologies for Field Data Collection; Bill Timmins^{1*}

¹ GIS Services, Tucson, AZ

4:00 PM: Mapping Community Social Health: A Spatial Geo Humanities Trans-Disciplinary Service Learning Project; Darrel McDonald^{1*}, Emmerentie Oliphant², Stephen Cooper², Jeffery Roth¹, Becky Price-Mayo², and Charles Ashton¹

¹ Department of Social and Cultural Analysis, Stephen F. Austin State University, Nacogdoches, TX

² School of Social Work, Stephen F. Austin State University, Nacogdoches, TX

4:20 PM: Enhancing the Relevance of Geography in Exploring Human-Environment Relationships in the Rocky Mountain West; Christopher Brown^{1*}

¹ Department of Geography, New Mexico State University, Las Cruces, NM

4:40 PM: The Remarkable, Hypotheses, and Critical Thinking; Daniel Dugas^{1*}

¹ Department of Geography, New Mexico State University, Las Cruces, NM

Space, Place, and Time (2)

Room: Chamberino

Session Chair: Paul Adams (University of Texas at Austin)

3:20 PM: A Historical-Geographical Survey of Oklahoma's Malaria Problem; Alyson Greiner^{1*}

¹ Department of Geography, Oklahoma State University, Stillwater, OK

3:40 PM: Less Cotton and More Hell: The Emergence of the Modern American Woman from the 1800s American Western Experience; Connie A. Brownson^{1*}

¹ Department of Geography, Texas State University, San Marcos, TX

4:00 PM: (Re)Making "Artist" Identity through Art, Tourism, and New Orleans's Jackson Square; Rebecca Sheehan^{1*}

¹ Department of Geography, Oklahoma State University, Stillwater, OK

4:20 PM: Terroir-ism in California's Wine Industry: Wineries' Use of Place to Indicate Quality on Their Websites; John Tiefenbacher^{1*}

¹ Department of Geography, Texas State University, San Marcos, TX

4:40 PM: The Case of the Missing Laureate: The Communication Geography of the 2010 Nobel Peace Prize; Paul Adams^{1*}

¹ Department of Geography and the Environment, University of Texas, Austin, TX

Protecting Sacred Sites (3)

Room: Santo Tomas

Organizers: Mark Palmer (University of Missouri) and Laurel Smith (University of Oklahoma)

Sponsorship: Indigenous Peoples Specialty Group of the AAG

Session Chairs: Laurel Smith (University of Oklahoma) and Mark Palmer (University of Missouri)

Panelists:

Alex Mares, New Mexico Parks and Wildlife, El Paso, TX

Jorge Marrufo, Independent Researcher, El Paso, TX

Mark Palmer, University of Missouri, Columbia, MO

Laurel Smith, University of Oklahoma, Norman, OK

Dewey Tsonetokoy Sr., Kiowa Ethnographic Endeavor for Preservation, Carnegie, OK

The purpose of this panel is to bring together a group of Indigenous scholars and activists to discuss,

critically, issues pertaining to the protection of sacred sites and offer examples of successful interventions that have occurred in the United States. Indigenous geographers and supranational organizations are keenly aware of Indigenous issues pertaining to sacred sites, on a global-scale. The Special Rapporteur, James Anaya, researched and composed a report to the United Nations General Assembly on the state of Indigenous rights in the United States. One important finding emphasized the challenges of using and protecting sacred sites by Indigenous people. Cultural disadvantages encountered by America's Indigenous populations emerged as a result of the United States' colonial legacy and continues through the processes of neocolonialism. The United Nations report stated, "With their loss of land, indigenous peoples have lost control over places of cultural and religious significance. Particular sites and geographic spaces that are sacred to indigenous peoples can be found throughout the vast expanse of lands that have passed into government hands. The ability of indigenous peoples to use and access their sacred places is often curtailed by mining, logging, hydroelectric and other development projects, which are carried out under permits issued by federal or state authorities. In many cases, the very presence of these activities represents a desecration... The desecration and lack of access to sacred places inflicts permanent harm on indigenous peoples for whom these places are essential parts of identity." Each panelist will discuss an issue for 10 to 15 minutes, followed by questions and interactions with the audience participants.

Posters

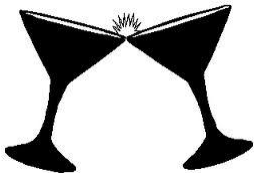
Room: Promenade

Official poster sessions are on Friday, October 26, 8:20 AM – 10:00 AM, 10:20 AM – 12:00 PM, and 1:20 PM - 3:00 PM. Poster presenters will be available to interact with the audience during those times. However, presenters are encouraged to hang their posters after check-in and leave them up for the duration of the meeting so that meeting participants have ample time to enjoy them.

Thursday, October 25 • 5 :00 PM - 7:00 PM

Reception

Location: Pool/Bar



Snacks and one **free** glass of **beer** or **wine** for each registered meeting participant; then cash bar.

Dinner

On your own.

Try one of the places listed in the “**Bars, Restaurants, and Cafés in Las Cruces and Mesilla, NM**” section at the end of this document.

Friday, October 26 • 8:00 AM - 12:00 PM

Conference Check-In

Room: San Juan



Friday, October 26 • 8:20 AM - 10:00 AM

Student Paper Competition I (4)

Room: Mesilla

Session Chair: Rebecca Sheehan (Oklahoma State University)

8:20 AM: With a Little Help from Friends: Transborder Indigenous Geographies and Community Development in the Mixteca Region of Oaxaca; Margaret Holleman^{1*}

¹ Department of Geography and Environmental Sustainability, University of Oklahoma, Norman, OK

8:40 AM: An Evolving Home: Communal Vision and Changing Livelihood in an Amazonian Religious Community; Jonathan Lowell^{1*}

¹ Department of Geography and the Environment, University of Texas, Austin, TX

9:00 AM: Dog Parks and Their Users; Lacy Jo Burgess^{1*} and Fred Shelley¹

¹ Department of Geography and Environmental Sustainability, University of Oklahoma, Norman, OK

9:20 AM: Analysis of the Spatial-Temporal Distribution of the Mosquito Vectors of Sylvatic Dengue and Chikungunya Viruses; Rebecca Richman^{1*}

¹ Department of Geography, New Mexico State University, Las Cruces, NM

Landscapes and New Mexico (5)

Room: Chamberino

Session Chair: John Wright (New Mexico State University)

8:20 AM: Becoming a State Different: New Mexico's Stumble to Statehood; Jon Hunner^{1*}

¹ Department of History, New Mexico State University, Las Cruces, NM

8:40 AM: Acequia Culture in the Mesilla Valley; Amado Reyes Guzmán^{1*}

¹ Department of History, New Mexico State University, Las Cruces, NM

9:00 AM: Mapping the Landscape of Quality of Life in Dona Ana County; Christopher Brown^{1*}

¹ Department of Geography, New Mexico State University, Las Cruces, NM

9:20 AM: The New Mexico Land Conservancy: Comparing Strategic and Opportunistic Land Protection Approaches; John Wright^{1*}

¹ Department of Geography, New Mexico State University, Las Cruces, NM

9:40 AM: Paradigm for Landscapes; Rod Squires^{1*}

¹ Department of Geography, Environment and Society, University of Minnesota, Minneapolis, MN

Indigenous Geographies (6)

Room: Santo Tomas

Session Chair: Mark Palmer (University of Missouri)

8:20 AM: The Chickasaw Nation Points East: An Analysis of Historical Representations in the Chickasaw Nation Using GIS; Cory Copeland^{1*}, Matt McNair¹, and Heather Basara¹

¹ Department of Geography and Environmental Sustainability, University of Oklahoma, Norman, OK

8:40 AM: Erasing Native Women in Their Homelands: Human Rights and the Violence Against Women Act (VAWA); Laura Harjo^{1*}

¹ Community and Regional Planning Program, University of New Mexico, Albuquerque, NM

9:00 AM: Oklahoma Inter-Tribal Meeting on Climate Variability and Change; Rachel Riley^{1,2}, Paulette Blanchard^{1,3*}, and Renee McPherson^{1,4}

¹ Department of Geography and Environmental Sustainability, University of Oklahoma, Norman, OK

² Southern Climate Impacts Planning Program, University of Oklahoma, Norman, OK

³ Department of Indigenous and American Indian Studies, Haskell Indian Nations University, Lawrence, KS

⁴ Oklahoma Climatological Survey, University of Oklahoma, Norman, OK

9:20 AM: Participatory Video: A Possible Pathway to Inter-Epistemological Conversations About Climate Change?; Laurel Smith^{1*}

¹ Department of Geography and Environmental Sustainability, University of Oklahoma, Norman, OK

Discussant: Eric Sheppard, Department of Geography, University of California, Los Angeles, CA, and Association of American Geographers, Washington, DC

Poster Session I (7)

Room: Promenade

Environmental Characterization of Rangeland Pastures in Piñon-Juniper Grassland Mosaics in Central New Mexico; Vanessa J. Prileson^{1*}, Andrés F. Cibils¹, Michaela Buenemann², Caitriana M. Steele³, Eric J. Scholleggerdes¹, Darren K. James³, Richard L. Dunlap¹, Shad H. Cox¹, Wendy Taylor¹, and Stephanie López¹

¹ Department of Animal and Range Sciences, New Mexico State University, Las Cruces, NM

² Department of Geography, New Mexico State University, Las Cruces, NM

³ USDA-ARS Jornada Experimental Range, Las Cruces, NM

Phenological Change Along an Elevational Gradient in a Sky Island Watershed; Nate Currit^{1*}

¹ Department of Geography, Texas State University, San Marcos, TX

Mule Deer (*Odocoileus Hemionus*) Habitat Preferences in a Semidesertic Ecosystem: Seasonal Diet Quality and Composition Changes; Martha Olivas^{1*}, Cuauhciuatl Vital¹, and Juan Pedro Flores¹

¹ Universidad Autónoma de Ciudad Juárez, Ciudad Juárez, Mexico

An Evaluation of Protection Efforts for the Mexican Spotted Owl in Lincoln National Forest; Madelyn Cochran^{1*}

¹ Department of Geography, New Mexico State University, Las Cruces, NM

An Analysis of Spatial Concordance Between Ecosystem Services and Biodiversity: A Cross-Regional Comparison at the Sub-Basin Scale; Darin A. Kopp^{1*}, Kenneth G. Boykin¹, William G. Kepner², and David F. Bradford²

¹ New Mexico Cooperative Fish and Wildlife Research Unit, Department of Fish, Wildlife and Conservation Ecology, New Mexico State University, Las Cruces, NM

² U.S. Environmental Protection Agency, Office of Research and Development, Las Vegas, NV

JournalMap: Geo-Semantic Searching for Relevant Knowledge; Jason Karl¹, Robert S. Unnasch², Jeffrey E. Herrick¹, and Jeffrey Gillan^{1*}

¹ USDA-ARS Jornada Experimental Range, Las Cruces, NM

² Nature Conservancy Idaho, Boise, ID

Charquini Glacier Southeast Ice Thickness Measured in 2012 Using Ground Penetrating Radar to Inform Tropical Glacier Volume-Area Scaling; Joni Kincaid^{1*}, Iliyana Dobрева¹, Andrew Klein¹, Arturo Echalar², Gabriel Castellón³, Daniel Espinoza², Roger Tinta², and Ariel Cakuaya²

¹ Department of Geography, Texas A&M University, College Station, TX

² Instituto Geográfico Militar, La Paz, Bolivia

³ Escuela Militar de Ingeniería, La Paz, Bolivia

Intensities and Patterns of Land Transformations: The Case of the Northern Chihuahuan Desert; Michaela Buenemann^{1*}

¹ Department of Geography, New Mexico State University, Las Cruces, NM

Friday, October 26 • 10:00 AM - 10:20 AM

Break and Snacks

Location: Promenade



Friday, October 26 • 10:20 AM - 12:00 PM

Student Paper Competition II (8)

Room: Mesilla

Session Chair: Rebecca Sheehan (Oklahoma State University)

10:20 AM: American Graffiti? Sense of Place and Transgression of Imaginary Space in Marlow, Oklahoma; Matt McNair^{1*} and Cory Copeland¹

¹ Department of Geography and Environmental Sustainability, University of Oklahoma, Norman, OK

10:40 AM: Wind-Blown Sand: Initiation of Motion; Christy Swann^{1*}

¹ Department of Geography, Texas A&M University, College Station, TX

11:00 AM: Object-Oriented GIS: A 'Flat' Ontology of Pixels; Charlie Jackson^{1*}

¹ Department of Geography, New Mexico State University, Las Cruces, NM

Environmental Change (9)

Room: Chamberino

Session Chair: Matthew Fry (University of North Texas)

10:20 AM: Cement: Dependency, Global CO₂ Emissions, and Reorientation; Matthew Fry^{1*}

¹ Department of Geography, University of North Texas, Denton, TX

10:40 AM: Rural-to-Rural Trading in the City: Artisanal Sugarcane Liquor Commercialization in the Northeastern Peruvian Amazon; Mario Cardozo^{1*}

¹ Department of Geography and the Environment, University of Texas, Austin, TX

11:00 AM: The Economic Geography of Agricultural Land Parcels and Land Use in the Historical Ex-Plantation Arkansas 'Delta' Region; Patrick Hagge^{1*}

¹ Department of History and Political Science, Arkansas Tech University, Russellville, AR

11:20 AM: Re-Photography and Landscape Change: Developing a Model for Monitoring Human Impact in Colorado's San Juan Mountains; Pete McCormick^{1*} and Robert Blair²

¹ Environmental Studies Program, Fort Lewis College, Durango, CO

² Mountain Studies Institute, Durango, CO

11:40 AM: Landscape Change in the Greater Gila Ecosystem, 1953-2011; Josh Baldwin^{1*}

¹ Department of Geography, New Mexico State University, Las Cruces, NM

Law's Geographies (10)

Room: Santo Tomas

Session Chair: Mark Harm Benson (University of New Mexico)

10:20 AM: Rules of Engagement: The Spatiality of Judicial Review; Melinda Harm Benson^{1*}

¹ Department of Geography and Environmental Studies, University of New Mexico, Albuquerque, NM

10:40 AM: Fluid Courts: The Cultural-Legal Geography of Water Conflicts in Territorial New Mexico; Maria Lane^{1*}

¹ Department of Geography and Environmental Studies, University of New Mexico, Albuquerque, NM

11:00 AM: Law, Property, Violence; David Correia^{1*}

¹ Department of Geography and Environmental Studies, University of New Mexico, Albuquerque, NM

11:20 AM: Using Legal Geography to Identify Legal Mechanisms for Enacting Progressive Change; John Carr^{1*}

¹ Department of Geography and Environmental Studies, University of New Mexico, Albuquerque, NM

Discussant: Eric Sheppard, Department of Geography, University of California, Los Angeles, CA, and Association of American Geographers, Washington, DC

Poster Session II (11)

Room: Promenade

Desertification Research in the 21st Century: An Evaluation of Research and Reclamation Efforts Worldwide; Christy Bankston^{1*}

¹ Department of Geography, New Mexico State University, Las Cruces, NM

Spatio-Temporal Variability in Atmospheric Wet Deposition Across Borneo: Biomass Burning, ENSO, and Urbanization; Kereen Griffith^{1*}, Alexandra G. Ponette-González¹, and Lisa M. Curran²

¹ Department of Geography, University of North Texas, Denton, TX

² Department of Anthropology, Stanford University, Stanford, CA

Comparison of the Causes of the 1980 and 2011 Heat Waves in the Southern Plains; Kent McGregor^{1*}

¹ Department of Geography, University of North Texas, Denton, TX

Empirically Derived Stage-Discharge Rating Curve; Jennifer Nichols^{1*}

¹ Institute of Applied Science, University of North Texas, Denton, TX

Linking Geographic Information Systems and Cost Benefit Analysis to Aid Land Management Decisions Related to Eco-Labeled Viticulture; Alicia Gray^{1*}

¹ Department of Geography, University of North Texas, Denton, TX

Finding Farmland in Urban Neighborhoods: A GIS Approach; Marcio DaSilva^{1*}

¹ Department of Geography, University of North Texas, Denton, TX

Collection and Use of Medicinal Plants in two Bulgarian Village Communities in the Central Rhodope Mountains; Ana Todorova^{1*}

¹ Department of Geography and Environmental Sustainability, University of Oklahoma, Norman, OK

Toyota Prius vs. Honda Fit: In Respect to Carbon Footprint; Madeline Hackenberg¹ and George F. Maxey^{1*}

¹ Department of Geography, University of North Texas, Denton, TX

Late-Night Laughs at the Arab Spring; Darren Purcell^{1*} and Brooks Heitmeier²

¹ Department of Geography and Environmental Sustainability, University of Oklahoma, Norman, OK

² Honors College, University of Oklahoma, Norman, OK

Luncheon

Location: Brazito

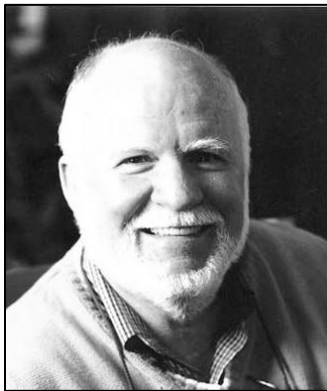
Texas BBQ Buffet, catered by the Ramada Palms Hotel and Conference Center

Keynote Address

Billie L. Turner II

Land Systems Architecture:

Wedding Human-Environment and GIS-Spatial Geographies for Sustainability



B. L. Turner II (Ph.D., 1974, University of Wisconsin, Madison; BA 1968 and MA 1969, University of Texas at Austin) examines human-environment relationships, ranging from ancient Maya agriculture and environment in Mexico and Central America to contemporary global land-use change and sustainability science. He has conducted field research on these themes, funded by the National Science Foundation, National Geographic Society, National Aeronautic and Space Administration, National Endowment for the Humanities, and the A.W. Mellon Foundation, among others. His current research projects have helped to develop and advance land change science—integrating environmental, socioeconomic and remote sensing sciences—primarily through the exploration of tropical deforestation in the southern

Yucatán but more recently in the urban-Sonoran Desert environments of Arizona.

Professor Turner has served on numerous national and international boards and committees, including the Committee on the Human Dimensions of Global Environmental Change (NRC), Committee on Geography (NRC, Chair), the Board on Earth Sciences and Resources (NRC), the Board on Agriculture and Natural Resources (NRC), the Panel on Advancing the Science of Climate Change, and various land-change science efforts of the IGBP, IHDP, and NEON (AIBS). He currently serves on the Science Committee of DIVERSITAS, the Roundtable on Science and Technology for Sustainability, NAS, and the NRC Committee on Land Change Modeling. He also serves on the editorial boards of *Regional Environmental Change*, *Land Use Science*, and *Environmental Science & Policy*, among others, and is an Associate Editor of the *Proceedings of the National Academy of Sciences*. He is a former Guggenheim Fellow and Fellow of the Center for Advanced Studies in the Behavioral Sciences, recipient of Honors in Research, Association of American Geographers and the Centenary Medal, Royal Scottish Geographical Society, Fellow of the American Association for the Advancement of Science and the Massachusetts Academy of Science, and a member of the National Academy of Sciences, American Academy of Arts and Sciences, and Massachusetts Academy of Sciences.

Dr. Turner has served as Director, Graduate School of Geography and Director, George Perkins Marsh Institute, both at Clark University. Dr. Turner is currently serving as Gilbert F. White Professor of Environment and Society in the School of Geographical Sciences and Urban Planning & School of Sustainability at Arizona State University.

Remote Sensing Applications (12)

Room: Mesilla

Session Chair: Jeffrey Gillan (USDA-ARS Jornada Experimental Range)

1:20 PM: Derivation of Bathymetric Information from Multi-Spectral Satellite Imagery Using Co-Kriging Interpolation Method; Haibin Su^{1*}

¹ Department of Physics and Geosciences, Texas A&M University, Kingsville, TX

1:40 PM: Modeling Vegetation Heights from High Resolution Stereo Aerial Photography: An Application for Broad-Scale Rangeland Monitoring; Jeffrey Gillan^{1*}, Jason Karl¹; and Michael Duniway²

¹ USDA-ARS Jornada Experimental Range, Las Cruces, NM

² USGS-BRD Canyonlands Research Station, Moab, UT

2:00 PM: The Heat Island New Orleans: Preliminary Results of Determining the Impact of Hurricanes Katrina and Isaac on an Urban Phenomenon; Aram Lief^{1*}

¹ University of New Orleans, New Orleans, LA

2:20 PM: The Impacts of Climate Change on Lake Level Variations in the Tibetan Lakes: Landsat Observations and Numerical Simulations; Feifei Pan^{1*}, Huadong Guo², Jinjuan Liao²; and Xinwu Li²

¹ Department of Geography, University of North Texas, Denton, TX

² Center for Earth Observation and Digital Earth, Chinese Academy of Sciences

2:40 PM: Remote Sensing and Integrated Environmental Assessment: Case Studies of Africa's Water Resources; Stanley Mubako^{1*}

¹ Center for Environmental Resource Management, University of Texas, El Paso, TX

Climate, Water, and People (13)

Room: Chamberino

Session Chair: Christian Brannstrom (Texas A&M University)

1:20 PM: Monthly Temperature and Precipitation Persistence in New Mexico; Rich Dixon^{1*}

¹ Department of Geography, Texas State University, San Marcos, TX

1:40 PM: Estimating the Wind Power Resource in Data-Poor Iraq; Abdulkareem Hawta Al-Khayyat¹ and Steve Stadler^{2*}

¹ Salahaddin University, Iraq

² Department of Geography, Oklahoma State University, Stillwater, OK

2:00 PM: The Effects of a Half-Hearted Neo-Liberal Transformation on Water Resources and the Environment in Tajikistan; William Rowe^{1*}

¹ Department of Geography and Anthropology, Louisiana State University, Baton Rouge, LA

2:20 PM: Two Portraits of Water Scarcity in the Middle East; Bryant Evans^{1*}

¹ Department of History, Geography, and Philosophy, Houston Community College, Houston, TX

2:40 PM: Perception of Rip Current Hazard in Galveston Island; Sarah Trimble¹, Christian Brannstrom^{1*}, Chris Houser¹, Heather Lee¹, and Anna Santos¹

¹ Department of Geography, Texas A&M University, College Station, TX

Transportation Geography (14)

Room: Santo Tomas

Session Chair: Michael Yoder (University of Central Arkansas)

1:20 PM: Implementation of Public-Private Partnership Initiatives for Transportation Demand Management: A Study of South Florida Commuter Services; Constantine Hadjilambrinos^{1*} and Elizabeth Rockwell²

¹ Department of Geography and Environmental Studies, University of New Mexico, Albuquerque, NM

² Miami-Dade Metropolitan Planning Organization, Miami, FL

1:40 PM: Using the Kaldor-Hicks Tableau to Assess Sustainability in Cost-Benefit Analysis in Public Transportation; Colin P. Sherman^{1*} and Bradley W. Lane¹

¹ Masters of Public Administration Program, University of Texas, El Paso, TX

2:00 PM: Geographically Weighted Regression (GWR) Models for Explaining Modal Choice: Evidence from St. Louis; Bradley W. Lane^{1*}, Colin P. Sherman¹, and Takatsugu Kobayashi²

¹ Masters of Public Administration Program, University of Texas, El Paso, TX

² IMJ Group and Indiana University

2:20 PM: Sustainable Public Transportation in Central Arkansas: A Proposal for the Implementation of Bus Rapid Transit; Lesley Waterson^{1*}

¹ Honors College, University of Central Arkansas, Conway, AR

2:40 PM: Transportation Development and Economic Promotion in the Fort Smith Metropolitan Area; Michael Yoder^{1*}

¹ Department of Geography, University of Central Arkansas, Conway, AR

Student Poster Competition (15)

Room: Promenade

Evaluating Bicycle Rack Placement in Downtown Denton, Texas; Kate Lester^{1*} and Joseph Whitney¹

¹ Department of Geography, University of North Texas, Denton, TX

Holocene Development and Progression of Aeolian Dune Blowouts on Padre Island National Seashore; Mallorie Jewell^{1*}

¹ Department of Geography, Texas A&M University, Austin, TX

Detection of *Eragrostis Lehmanniana* (Lehmann Lovegrass) Using Multispectral Imagery from an Unmanned Aircraft System; Amalia Slaughter^{1,2*}

¹ Department of Geography, New Mexico State University, Las Cruces, NM

² USDA ARS Jornada Experimental Range, Las Cruces, NM

Examining Aquifer Pollution Sensitivity in the Central Paso del Norte Region Using the DRASTIC Model; Steve Walker^{1,2*}, Heather Glaze², and John Hawley³

¹ Department of Geography, New Mexico State University, Las Cruces, NM

² New Mexico Water Resources Research Institute, New Mexico State University, Las Cruces, NM

³ Hawley Geomatters, Albuquerque, NM

Friday, October 26 • 3:00 PM - 3:20 PM

Break and Snacks

Location: Promenade



Friday, October 26 • 3:20 PM - 5:00 PM

GIS Applications (16)

Room: Mesilla

Session Chair: Alberto Giordano (Texas State University)

3:20 PM: A Network-Based Comparison of Accessibility to Healthcare Services in a Rural Area. Evidence from the Chickasaw Nation of Oklahoma; Frank Yeboah^{1*}

¹ Department of Geography and Environmental Sustainability, University of Oklahoma, Norman, OK

3:40 PM: Towards a Multidisciplinary Approach to the Study of Genocide; Alberto Giordano^{1*}

¹ Department of Geography, Texas State University, San Marcos, TX

4:00 PM: Race/Ethnicity in Sebastian County, Arkansas; Linda S. Fair^{1*}

¹ Department of History, Geography, Political Science, Philosophy, and Religious Study, University of Arkansas, Fort Smith, AR

4:20 PM: Grocery Stores as Potential Recycling Facilities; Jeremy A. Meagher^{1*}

¹ Department of Geography, Texas State University, San Marcos, TX

4:40 PM: Taxonomies and Scales for Geographically-Embedded Networks; Clio Andris^{1*}

¹ Santa Fe Institute, Santa Fe, NM

Biogeography (17)

Room: Chamberino

Session Chair: George Maxey (University of North Texas)

3:20 PM: Spatial Analysis of Woody Species in Northwest Botswana; Thomas Christiansen^{1*}

¹ Department of Geography and the Environment, University of Texas, Austin, TX

3:40 PM: The Effects of Riparian Landscape Differences on Avian Species Diversity in the Gila Lower Box Wildlife Habitat Area, New Mexico; Carol Campbell^{1*}

¹ Department of Geography, New Mexico State University, Las Cruces, NM

4:00 PM: Golden-Cheeked Warbler Population and Conservation in Texas; Tabitha H. Kao¹ and George Maxey^{1*}

¹ Department of Geography, University of North Texas, Denton, TX

4:20 PM: The Biogeographic Impact of Climatic Extremes in the Chisos Mountains of Big Bend National Park, Texas; Don Jonsson^{1*} and Kesslyn Jonsson²

¹ Department of Geography, Austin Community College, Austin, TX

² Burnet High School, Burnet, TX

4:40 PM: Influence of Monsoon-Related Riparian Phenology to Yellow-Billed Cuckoo Habitat Selection in Arizona; Cynthia S. A. Wallace^{1*}, Miguel Villarreal¹, and Charles van Riper III²

¹ Western Geographic Science Center, U.S. Geological Survey, Tucson, AZ

² Southwest Biological Science Center, Sonoran Desert Research Station, U.S. Geological Survey, Tucson, AZ

Geography Graduate Programs (18)

Room: Santo Tomas

Organizers:

Murray Rice (University of North Texas) and Michaela Buenemann (New Mexico State University)

Session Chair: Murray Rice (University of North Texas)

Represented Departments:

Geography, University of Central Arkansas, Conway, AR
Geography, University of New Orleans, New Orleans, LA
Geography and Environmental Sustainability, University of Oklahoma, Norman, OK
Geography, Oklahoma State University, Stillwater, OK
Geography and the Environment, University of Texas, Austin, TX
Geography, Texas A&M University, College Station, TX
Geography, University of North Texas, Denton, TX
Social and Cultural Analysis, Stephen F. Austin State University, Nacogdoches, TX
Geography, Texas State University, San Marcos, TX
Geography and Environmental Studies, University of New Mexico, Albuquerque, NM
Geography, New Mexico State University, Las Cruces, NM

The purpose of the session is to connect potential geography graduate students with geography graduate programs in the region. Representatives from the programs will begin the session with brief presentations about their programs. The remainder of the session will provide informal time for students and representatives to meet. In addition, information about the different programs may be available in display and handout materials.

Friday, October 26 • 5:00 PM - 6:00 PM

SWAAG Business Meeting

Room: San Miguel

Organizers:

SWAAG Chair, Darren Purcell (University of Oklahoma)
SWAAG Secretary: Murray Rice (University of North Texas)
SWAAG Treasurer: Rebecca Sheehan

Everyone is welcome to attend the business meeting!



Awards Banquet & Dinner Buffet

Location: Mesilla Valley Bosque State Park

Shuttles to the Bosque will leave from the front entrance of the Ramada between 6:00 pm and 6:45 pm. Shuttles to the Ramada will leave from the parking lot at the Bosque starting at 8:30 pm. If you are driving yourself, we recommend you follow the directions on page 4.

Authentic New Mexican Buffet, catered by Andele Restaurante

Keynote Address

Eric Sheppard

**Eco-State Restructuring with Chinese Characteristics:
A Study of Eco-City Development in China**



Eric Sheppard is currently serving as President of the Association of American Geographers. He is also Humboldt Professor of Geography at UCLA, having recently left the University of Minnesota after 36 years. PhD (University of Toronto, 1976), MA (University of Toronto, 1974), B.Sc. (University of Bristol, 1972). Awards include: Regents Professor, University of Minnesota; Distinguished Scholarship Honors, Association of American Geographers; Fellow, Center for Advanced Studies in the Behavioral Sciences; Fesler-Lampert Professor for the Humanities, University of Minnesota; Scholar of the College of Liberal Arts, University of Minnesota. He has published *The Wiley-Blackwell Companion to Economic Geography* (with J. Peck and T.J. Barnes), *A World of*

Difference (with Philip W. Porter, David Faust and Richa Nagar, 1998), *Contesting Neoliberalism* (with H. Leitner and Peck), *A Companion to Economic Geography* (with Barnes), *Reading Economic Geography and Politics and Practice in Economic Geography* (with Barnes, J. Peck and A. Tickell), *Scale and Geographic Inquiry* (with R. B. McMaster), *The Capitalist Space Economy* (with Barnes), and over one hundred articles in such journals as *The Annals of the Association of American Geographers*, *Transactions of the Institute of British Geographers*, *Environment and Planning A*, *Society & Space*, *Journal of Regional Science*, and *Antipode*. He has supervised some 50 PhD and MA students, undertaking research in North and South America, East, southeast and south Asia, and sub-Saharan Africa, as well as serving on the committees of over 200 other graduate students in four colleges. His research interests include geographical political economy, uneven geographies of globalization, urban politics and policy, social movements, environmental justice, and geographical thought and methods.

Saturday, October 27

Field Trip to White Sands National Monument (8:00 AM – 5:00 PM)

Organizer/Leader: Dr. Dan Dugas

Departure from front entrance of the Ramada Palms; transportation and lunch provided

Emerging from the heart of south-central New Mexico at the northern end of the Chihuahuan Desert is one of the world's great natural wonders, the shimmering White Sands National Monument. The dunes cover 275 square miles of desert, creating the world's largest gypsum dune field. The pure gypsum (hydrous calcium sulfate) that forms the unusual dunes originates in the western portion of the monument from an ephemeral playa with a very high mineral content. The dune field is very dynamic, with the most active dunes moving to the northeast at a rate of up to 30 feet per year, while the more stable areas of sand move very little. The initiation of the dune field was the result of arid conditions ~7000 years ago when the Lake Otero playa basin began to dry, leaving gypsiferous lake sediments susceptible to erosion from the predominant southwest winds. These sediments were re-deposited across the basin floor, producing the dune field that is seen today. Sediments continue to erode from the Lake Lucero playa system, located southwest of the dune field. Many species of plants and animals have developed very specialized means of surviving in this diverse area of cold winters and hot summers, highly mineralized groundwater, and very little surface water. The field trip will take you from the conference location to White Sands National Monument, and will include a discussion of the area's geomorphology and ecology and walking excursions to interesting locations within the monument.

Field Trip to Downtown Las Cruces and Historic Mesilla (10:00 AM – 3:00 PM)

Organizer/Leader: Dr. Jack Wright

Departure from front entrance of the Ramada Palms; transportation and lunch provided

Las Cruces began as a railroad settlement that evolved into a generic, rapidly urbanizing Sunbelt city whose growth is driven by migration, retirement, and regional trade. We will do a cross-section of Las Cruces from the Mesquite barrio (including a visit of a restored adobe home), through the redeveloping downtown, and on to a dominantly Anglo area of historic residences. In contrast, Mesilla is a Mexican-era land grant village (1851) which still displays the classic Laws of the Indies morphology including a vibrant central plaza. This village of 2,500 people was the signing place of the Gadsden Purchase, briefly served as the capitol of Arizona Territory of the Confederate States of America, and was visited by Mexican revolutionary Pancho Villa. We will tour the village on foot and visit the outlying pecan orchards and chili fields along the Rio Grande—a “Greenbelt” farming landscape threatened by rural residential development. At the end of the trip, we will stop at a wine bar near the plaza serving New Mexico vintages. Jack Wright has lived in Mesilla since 1990.

Other Trips: On Your Own.

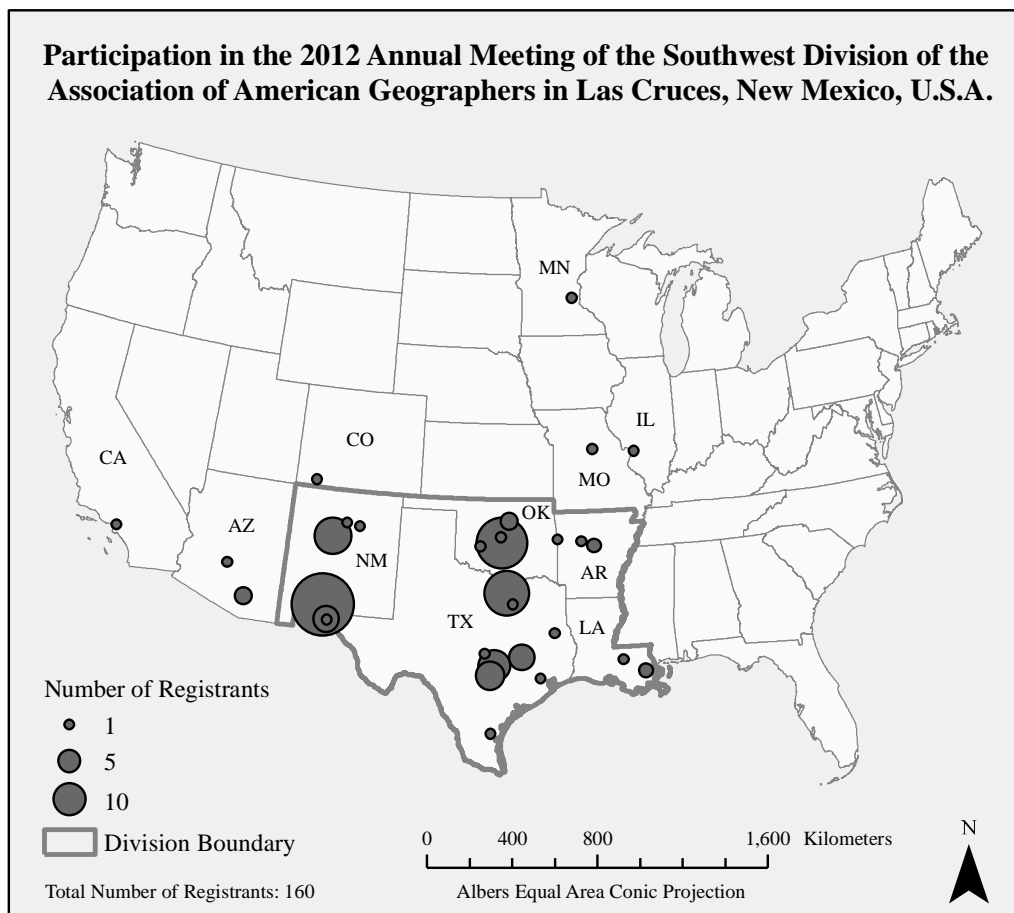
Try one or more of the “Attractions in Southern New Mexico” listed at the end of this document.

Meeting Participants

Paul C. Adams, University of Texas, Austin, TX
 Clio Andris, Santa Fe Institute, Santa Fe, NM
 Jordan Baisden, University of Oklahoma, Norman, OK
 Josh Baldwin, New Mexico State University, Las Cruces, NM
 Christy Bankston, New Mexico State University, Las Cruces, NM
 Melinda Harm Benson, University of New Mexico, Albuquerque, NM
 Alex Biggs, University of Texas, Austin, TX
 Paulette Blanchard, University of Oklahoma, Norman, OK
 Carolyn Bleakney, University of New Mexico, Albuquerque, NM
 Christian Brannstrom, Texas A&M University, College Station, TX
 Christopher Brown, New Mexico State University, Las Cruces, NM
 Connie Brownson, Texas State University, San Marcos, TX
 Michaela Buenemann, New Mexico State University, Las Cruces, NM
 Lacy Jo Burgess, University of Oklahoma, Norman, OK
 Mona Burgess, University of Oklahoma, Norman, OK
 Douglas Burns, HDR Engineering, Inc., Dallas, TX
 David Calhoun, University of Oklahoma, Norman, OK
 Carol Campbell, New Mexico State University, Las Cruces, NM
 Mario Cardozo, University of Texas, Austin, TX
 John Carr, University of New Mexico, Albuquerque, NM
 Randy Carr, New Mexico State University, Las Cruces, NM
 Mars Chapman, University of Oklahoma, Norman, OK
 Nikki Chochrek, University of North Texas, Denton, TX
 Thomas Christiansen, University of Texas, Austin, TX
 John Clary, University of Texas, Austin, TX
 Madelyn Cochran, New Mexico State University, Las Cruces, NM
 Shanon Connelly, Ysleta del Sur Pueblo, El Paso, TX
 Cory Copeland, University of Oklahoma, Norman, OK
 David Correia, University of New Mexico, Albuquerque, NM
 Brad Cullen, University of New Mexico, Albuquerque, NM
 Nate Currit, Texas State University, San Marcos, TX
 Bob Czerniak, New Mexico State University, Las Cruces, NM
 Marcio DaSilva, University of North Texas, Denton, TX
 Danae Daugherty, University of North Texas, Denton, TX
 Michael DeMers, New Mexico State University, Las Cruces, NM
 Madeline Dillner, University of Oklahoma, Norman, OK
 Rich Dixon, Texas State University, San Marcos, TX
 Iliyana Dobrev, Texas A&M University, College Station, TX
 Bill Doolittle, University of Texas, Austin, TX
 Dan Dugas, New Mexico State University, Las Cruces, NM
 Eric Dust, Natioanl Geospatial-Intelligence Agency, Las Cruces, NM
 Chris Duvall, University of New Mexico, Albuquerque, NM
 Daniel Esser, American University and New Mexico State University, Las Cruces, NM
 Bryant Evans, Houston Community College, Houston, TX
 Linda S. Fair, University of Arkansas, Fort Smith, AR
 Ronny Forney, New Mexico State University, Las Cruces, NM
 Matt Fry, University of North Texas, Denton, TX
 Jeffrey Gillan, USDA-ARS Jornada Experimental Range, Las Cruces, NM
 Alberto Giordano, Texas State University, San Marcos, TX
 Amanda Gleason, University of North Texas, Denton, TX
 Jennifer Godby, New Mexico State University, Las Cruces, NM
 Glenn Gomez, University of North Texas, Denton, TX
 Filo Gómez, Oklahoma City Community College, Oklahoma City, OK
 Alicia E Gray, University of North Texas, Denton, TX
 Janet Greenlee, New Mexico State University, Las Cruces, NM
 Alyson Greiner, Oklahoma State University, Stillwater, OK
 Kereen T. Griffith, University of North Texas, Denton, TX
 Amado Guzman, New Mexico State University, Las Cruces, NM
 Costa Hadjilambrinos, University of New Mexico, Albuquerque, NM
 Ron Hagelman, Texas State University, San Marcos, TX
 Patrick Hagge, Arkansas Tech University, Russellville, AR
 Justin Hall, New Mexico State University, Las Cruces, NM
 Laura Harjo, University of New Mexico, Albuquerque, NM
 Justin Henry, University of Oklahoma, Norman, OK
 Katherine Higgins, New Mexico State University, Las Cruces, NM
 Maggie Holleman, University of Oklahoma, Norman, OK
 Angie Holliday, University of North Texas, Denton, TX
 Terry Huck, New Mexico State University, Las Cruces, NM
 Matt Huycke, University of Oklahoma, Norman, OK
 Juana Ibáñez, University of New Orleans, New Orleans, LA
 Benjamin Ignac, University of Oklahoma, Norman, OK
 Charlie Jackson, New Mexico State University, Las Cruces, NM
 Alanna L. Jentgen, New Mexico State University, Las Cruces, NM
 Mallorie Jewell, Texas A&M University, College Station, TX
 Joe Zebrowski, New Mexico Highlands University, Las Vegas, NM
 Don Jonsson, Austin Community College, Austin, TX
 Kesslyn Jonsson, Burnet High School, Burnet, TX
 Joni Kincaid, Texas A&M University, College Station, TX
 Toni Klemm, University of Oklahoma, Norman, OK
 Darin Kopp, New Mexico State University, Las Cruces, NM
 Endija Krēsliņa, University of Oklahoma, Norman, OK
 Bradley W. Lane, University of Texas, El Paso, TX
 Maria Lane, University of New Mexico, Albuquerque, NM
 Justin Laue, University of Texas, Austin, TX
 Kate Lester, University of North Texas, Denton, TX
 Taylor Levy, University of Texas, El Paso, TX
 Aram Parrish Lief, University of New Orleans, New Orleans, LA
 Chris Lippitt, University of New Mexico, Albuquerque, NM
 Jonathan Lowell, University of Texas, Austin, TX
 Roberta Lujan, New Mexico State University, Las Cruces, NM
 Alex Mares, New Mexico Parks and Wildlife Department, El Paso, TX
 Jorge Marrufo, Independent Researcher, El Paso, TX
 Amy Martin, New Mexico State University, Las Cruces, NM
 Olen Paul Matthews, University of New Mexico, Albuquerque, NM
 George F. Maxey, University of North Texas, Denton, TX
 Susan Maxey, University of North Texas, Denton, TX
 Pete McCormick, Fort Lewis College, Durango, CO
 Darrel L. McDonald, Stephen F. Austin State University, Nacogdoches, TX
 Kent McGregor, University of North Texas, Denton, TX
 Matt McNair, University of Oklahoma, Norman, OK
 Renee A. McPherson, University of Oklahoma, Norman, OK
 Jeremy Meagher, Texas State University, San Marcos, TX
 Maureen Meyer, University of New Mexico, Albuquerque, NM
 Stanley Mubako, University of Texas, El Paso, TX
 Lizzie Mueth, Southern Illinois University, Edwardsville, IL

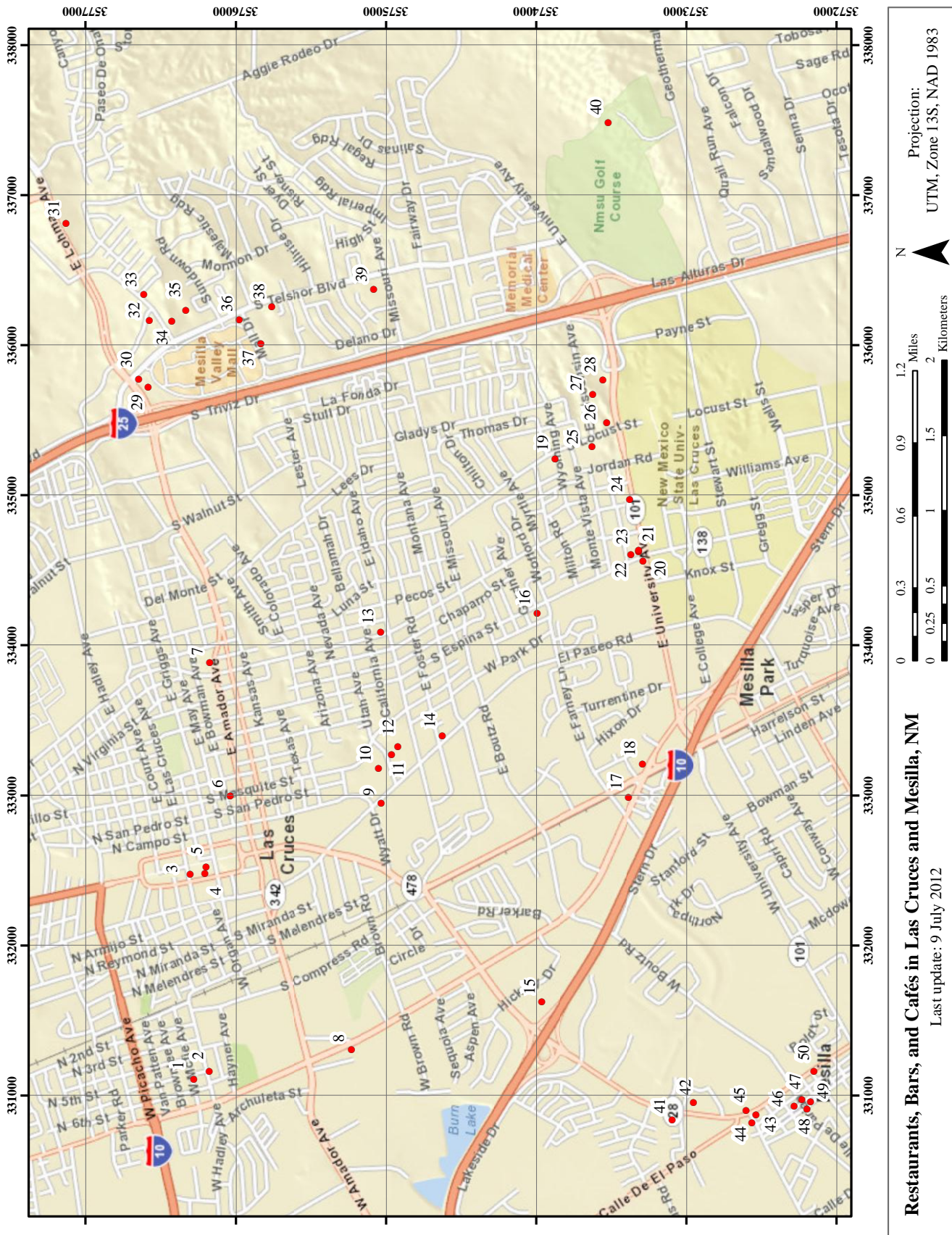
Tom Murphy, New Mexico State University, Las Cruces, NM
 Jennifer Nichols, University of North Texas, Denton, TX
 M. C. Martha P. Olivas, Universidad Autonoma de Ciudad Juárez,
 Ciudad Juárez, Mexico
 Audrey Olmsted, New Mexico State University, NM
 Molly Padgett, University of New Mexico, Albuquerque, NM
 Mark Palmer, University of Missouri, Columbia, MO
 Feifei Pan, University of North Texas, Denton, TX
 Ingrid Patel, University of North Texas, Denton, TX
 Caroline Pavlowsky, University of Oklahoma, Norman, OK
 Jim Peterson, Texas State University, San Marcos, TX
 Pam Pick, New Mexico State University, Las Cruces, NM
 Robert Pollock, USDA-NRCS, Las Cruces, NM
 Vanessa Prileson, New Mexico State University, Las Cruces, NM
 Erik Prout, Texas A&M University, College Station, TX
 Darren Purcell, University of Oklahoma, Norman, OK
 Amanda Regan, University of North Texas, Denton, TX
 Murray Rice, University of North Texas, Denton, TX
 Rebecca Richman, New Mexico State University, Las Cruces, NM
 Robert Romero, New Mexico State University, Las Cruces, NM
 William Rowe, Louisiana State University, Baton Rouge, LA
 Robert Sabie, New Mexico State University, Las Cruces, NM
 Joseph Sardashti, University of Oklahoma, Norman, OK
 Kim Seidler, University of New Mexico, NM
 Rebecca Sheehan, Oklahoma State University, Stillwater, OK
 Eric Sheppard, University of California, Los Angeles, CA
 Alex Sherman, University of Oklahoma, Norman, OK
 Colin P. Sherman, University of Texas, El Paso, TX
 David Silcock, New Mexico State University, Las Cruces, NM

Susan Skirvin, Private Consultant, Tucson, AZ
 Amy Slaughter, New Mexico State University, Las Cruces, NM
 Laurel Smith, University of Oklahoma, Norman, OK
 Rod Squires, University of Minnesota, Minneapolis, MN
 Steve Stadler, Oklahoma State University, Stillwater, OK
 Haibin Su, Texas A&M University, Kingsville, TX
 Christy Swann, Texas A&M University, College Station, TX
 Linda Tatro, University of New Mexico, Albuquerque, NM
 John Tiefenbacher, Texas State University, San Marcos, TX
 Bill Timmins, GIS Services, Tucson, AZ
 Ana Todorova, University of Oklahoma, Norman, OK
 Levi Todt, University of Oklahoma, Norman, OK
 Sarah M. Trimble, Texas A&M University, College Station, TX
 Dewey Tsonetokoy Sr., Kiowa Ethnographic Endeavor for
 Preservation, Carnegie, OK
 B. L. Turner II, Arizona State University, Phoenix, AZ
 Austen Van Shoubrouek, University of Oklahoma, Norman, OK
 Matt Vogt, New Mexico State University, Las Cruces, NM
 Steve Walker, New Mexico State University, Las Cruces, NM
 Cindy Wallace, U.S. Geological Survey, Tucson, AZ
 Lesley Waterson, University of Central Arkansas, Conway, AR
 Joseph Whitney, University of North Texas, Denton, TX
 Robbie Wing, University of Oklahoma, Norman, OK
 Jack Wright, New Mexico State University, Las Cruces, NM
 Xuebin Yang, University of Texas, Austin, TX
 Frank Yeboah, University of Oklahoma, Norman, OK
 Michael Yoder, University of Central Arkansas, Conway, AR
 Winston Zack, University of North Texas, Denton, TX
 Nicole Zamora, New Mexico State University, Las Cruces, NM



Bars, Restaurants, and Cafés in Las Cruces and Mesilla, NM

ID	Name	Address	City	Phone	Category	Price
1	Nellie's Café	1226 W Hadley Ave.	Las Cruces	(575) 524-9882	Mexican	\$\$
2	High Desert Brewery Co	1201 West Hadley Ave.	Las Cruces	(575) 525-6752	American	\$\$
3	Day's Hamburgers	295 N Main St.	Las Cruces	(575) 523-8665	American	\$
4	SB's Late-Night Lunchbox	120 S. Water St.	Las Cruces	(412) 623-9556	Coffee & Tea	\$
5	Zeffiro Pizzeria Napoletana	136 South Water St.	Las Cruces	(575) 525-6757	Italian	\$\$
6	Nopalito Restaurant	310 S Mesquite St.	Las Cruces	(575) 524-0003	Mexican	\$
7	Delicias Café	1413 E Amador Ave.	Las Cruces	(575) 541-0902	Mexican	\$
8	Caliche's Frozen Custard	590 S Valley Dr.	Las Cruces	(575) 647-5066	Frozen Custard	\$
9	Tokyo Sushi	1030 El Paseo Rd	Las Cruces	(575) 541-9100	Japanese/Korean	\$\$
10	Pho Saigon	1160 El Paseo Rd	Las Cruces	(575) 652-4326	Vietnamese	\$
11	International Delights	1245 El Paseo Rd	Las Cruces	(575) 647-5956	Mediterranean	\$
12	Si Italian Bistro & Bakery	523 East Idaho Ave.	Las Cruces	(575) 523-1572	Italian	\$\$
13	Habaneros Fresh Mexican	1275 S Solano Dr.	Las Cruces	(575) 542-1829	Mexican	\$
14	Delicias del Mar	1401 El Paseo	Las Cruces	(575) 524-2396	Mexican	\$\$
15	Cracker Barrel Restaurant	1490 Hickory Dr.	Las Cruces	(575) 647-0067	American	\$\$
16	Boba Café	1900 S Espina	Las Cruces	(575) 647-5900	American	\$
17	Dick's Café	2305 S Valley Dr.	Las Cruces	(575) 524-1360	American/Mexican	\$
18	Chilitos Restaurant	2405 South Valley Dr.	Las Cruces	(575) 526-4184	Mexican	\$\$
19	Spirit Winds	2260 S Locust St.	Las Cruces	(575) 521-1222	Coffee & Tea	\$
20	Starbucks	985 E University Ave.	Las Cruces	(575) 647-2948	Coffee & Tea	\$\$
21	The Game Sports Bar & Grill	2605 S Espina	Las Cruces	(575) 524-4263	American	\$\$
22	Mix Pacific Rim	1001 E University Ave. Suite D4	Las Cruces	(575) 532-2042	Asian	\$\$
23	Mix Express	1001 E University Ave. Suite D3	Las Cruces	(575) 532-5553	Asian	\$\$\$
24	DG's University Deli	1035 E University Ave.	Las Cruces	(575) 522-8409	American	\$
25	Cha Chi's Restaurant	2460 S Locust Suite A	Las Cruces	(575) 522-7322	Mexican	\$\$
26	Dublin's Street Pub	1745 East University Ave.	Las Cruces	(575) 522-0932	Irish Pub	\$
27	Milagro Coffee Y Espresso	1733 E University Ave.	Las Cruces	(575) 532-1042	Coffee & Tea	\$
28	Lorenzo's Italian Restaurant	1753 E University Ave.	Las Cruces	(575) 521-3505	Italian	\$\$
29	Empire Buffet	510 S Telshor Blvd.	Las Cruces	(575) 522-2333	Chinese	\$
30	De La Vega's Pecan Grill & Brewery	500 South Telshor Blvd.	Las Cruces	(575) 521-1099	American	\$\$\$
31	Dion's Pizza	3950 E Lohman Ave.	Las Cruces	(575) 521-3434	Pizza	\$
32	Farley's Bar & Grill	3499 Foothills Rd	Las Cruces	(575) 522-0466	American	\$
33	Hooters	3530 Foothills Rd	Las Cruces	(575) 521-9898	American	\$\$
34	Azul Ultra Lounge	705 S Telshor Blvd	Las Cruces	(575) 522-4300	American	\$\$
35	Tiffany's Pizza & Deli Coffee Shop	755 S Telshor Blvd Suite G1	Las Cruces	(575) 532-5002	Greek	\$
36	Cattle Baron	790 S Telshor Blvd.	Las Cruces	(575) 522-7533	American	\$\$
37	Buffalo Wild Wings	2750 Mall Dr.	Las Cruces	(575) 521-1955	American	\$\$
38	Aqua Reef	900 S Telshor Blvd.	Las Cruces	(575) 522-7333	Asian	\$\$
39	Chinese Kitchen	720 S Telshor Blvd. Suite C	Las Cruces	(575) 521-3802	Chinese	\$
40	Players Grill	3000 Herb Wimberly Dr.	Las Cruces	(575) 646-2457	American	\$\$
41	St. Clair Winery and Bistro	1720 Avenida de Mesilla	Las Cruces	(575) 524-2408	American	\$\$
42	Paisano Café	1740 Calle De Mercado	Mesilla	(575) 524-0211	Mexican	\$\$
43	The Bean	2011 Avenida de Mesilla	Mesilla	(575) 527-5155	Coffee & Tea	\$
44	Andele Restaurant	1950 Calle del Norte	Mesilla	(575) 526-9631	Mexican	\$
45	Thai Delight	2148 Avenida De Mesilla	Mesilla	(575) 525-1900	Thai	\$\$
46	Double Eagle	2355 Calle De Guadalupe	Mesilla	(575) 523-6700	American	\$\$\$
47	La Posta de Mesilla	2410 Calle De San Albino	Mesilla	(575) 524-3524	Mexican	\$\$
48	El Patio Bar	2171 Calle De Parian	Mesilla	(575) 526-9943	American/Mexican	\$
49	Vintage Wines	2461 Calle De Principal	Mesilla	(575) 523-9463	American	\$\$
50	Palacio Bar	2600 Avenida De Mesilla	Mesilla	(575) 525-2910	Mexican	\$



Attractions in Southern New Mexico

ID	Name	URL	Phone	Distance from NMSU Geography Department	
				Miles	Hours
1	Very Large Array (VLA)	http://www.vla.nrao.edu/	575-835-7243	199.0	3.32
2	Bosque del Apache National Wildlife Refuge	http://www.fws.gov/southwest/refuges/newmex/bosque/	575-835-1828	134.0	2.23
3	Gila National Forest - Catwalk	http://www.fs.usda.gov/gila/	575-388-8201	179.0	3.48
4	Gila Cliff Dwellings National Monument	http://www.nps.gov/gicl/index.htm	575-536-9461	153.0	3.00
5	Valley of Fires Recreation Area	http://www.blm.gov/nm/st/en/prog/recreation/roswell/valley_of_fires.html	575-648-2241	132.0	2.53
6	Ghost Town Chloride	http://www.pioneerstoremuseum.com/	575-743-2736	117.0	2.28
7	Ski Apache	http://www.skiapache.com/	575-464-3600	137.0	3.15
8	Ruidoso	http://www.ruidoso.net/	575-257-7395	118.0	2.30
9	Inn of the Mountain Gods Resort and Casino	http://innofthemountaingods.com/	800-545-9011	114.0	2.23
10	Elephant Butte Lake State Park	http://www.emnrd.state.nm.us/prd/elephant.htm	575-744-5923	83.5	1.43
11	Hot Springs of Truth or Consequences Hot Springs	http://www.sierracountynewmexico.info/truth-or-consequences-hot-springs/#.T_u1l3A9U7A	575-894-1968	78.2	1.48
12	Spaceport America	http://spaceportamerica.com/	575-373-6110	62.1	2.33
13	City of Rocks State Park	http://www.emnrd.state.nm.us/prd/cityrocks.htm	575-536-2800	90.3	1.67
14	St. Clair Winery and Tasting Room	http://www.stclairwinery.com/	575-546-1179	55.6	1.07
15	Rockhound State Park	http://www.emnrd.state.nm.us/prd/rockhound.htm	575-546-6182	60.6	1.30
16	Pancho Villa State Park	http://www.emnrd.state.nm.us/prd/panchovilla.htm	575-531-2711	94.0	1.67
17	Hatch	http://www.hatchchilefest.com/	None	42.6	0.77
18	Fort Selden State Monument	http://www.nmmonuments.org/fort-selden	575-526-8911	20.1	0.42
19	Chihuahuan Desert Nature Park	http://asombro.org/naturepark.htm	575-524-3334	18.3	0.82
20	Prehistoric Trackways National Monument	http://www.blm.gov/nm/st/en/prog/recreation/las_cruces/trackways.html	575-525-4300	12.2	0.45
21	White Sands Missile Range Museum	http://www.wsmr-history.org/	575-647-1116	28.8	0.58
22	Organ Mountains: Dripping Springs Natural Area	http://www.blm.gov/nm/st/en/prog/recreation/las_cruces/dripping_springs.html	575-525-4300	25.9	0.65
23	Organ Mountains: Aguirre Springs National Recreation Site	http://www.blm.gov/nm/st/en/prog/recreation/las_cruces/aguirre_spring_campground.html	575-525-4300	11.1	0.48
24	New Mexico Farm and Ranch Heritage Museum	http://www.nmfarmandranchmuseum.org/	575-522-4100	2.7	0.13
25	Old Mesilla	http://www.oldmesilla.org/	575-524-3262	3.7	0.20
26	Mesilla Valley Bosque State Park	http://www.emnrd.state.nm.us/prd/mesillavalley.htm	575.523.4398	6.6	0.30
27	Kilbourne Hole Volcanic Crater	http://www.blm.gov/nm/st/en/prog/recreation/las_cruces/kilbourne_hole.html	575-525-4300	46.3	1.83
28	La Viña Winery	http://www.lavinawinery.com/	575-882-7632	29.8	0.67
29	New Mexico Museum of Space History	http://www.nmspacemuseum.org	575-437-2840	74.1	1.47
30	Cloudcroft	http://cloudcroft.com/	575-682-2733	90.4	1.73
31	White Sands National Monument	http://www.nps.gov/whsa/index.htm	575-479-6124	54.9	0.97
32	Oliver Lee Memorial State Park	http://www.emnrd.state.nm.us/PRD/oliverlee.htm	575-437-8284	81.5	1.57
33	Carlsbad Caverns National Park	http://www.nps.gov/cave/index.htm	575-785-2232	194.0	3.87

